

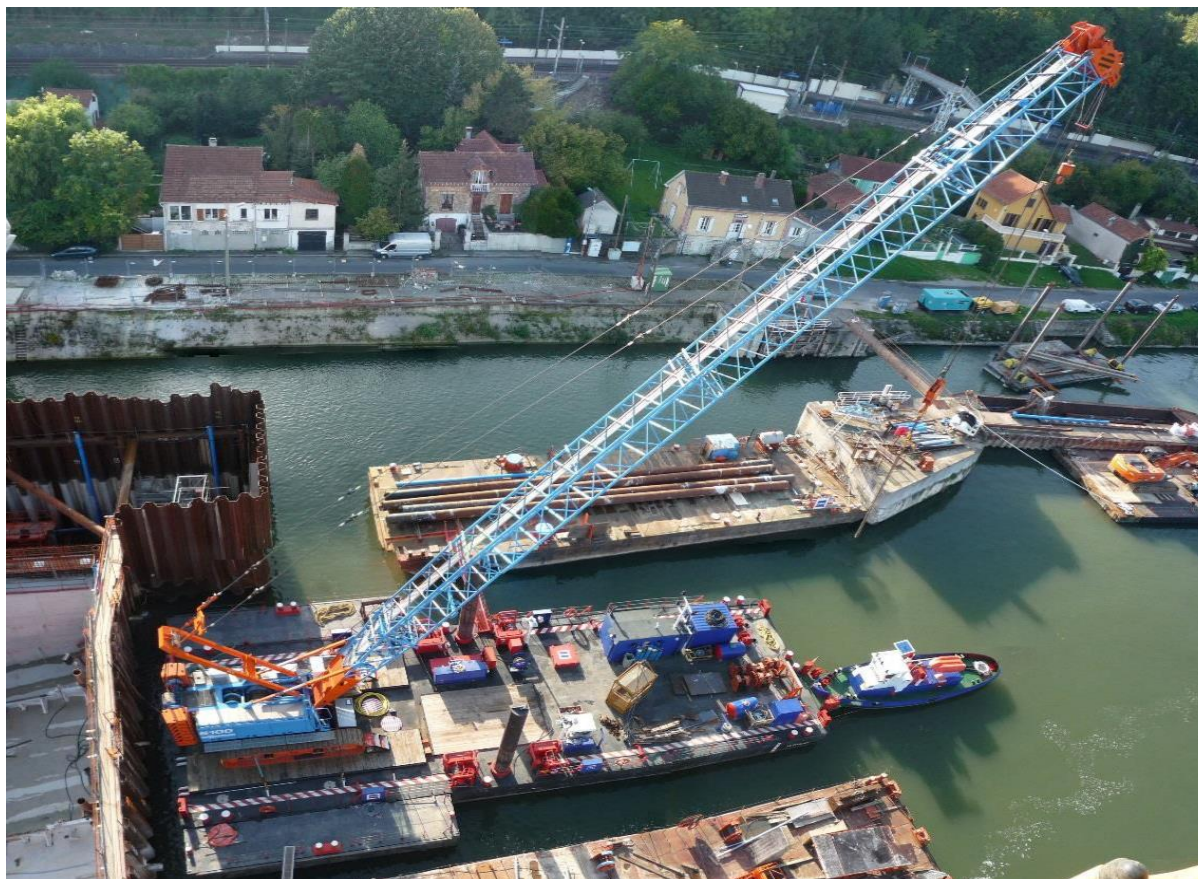
PONTOON OF MARITIME WORKS

COUDRAY



MARITIME ET FLUVIAL

Version 00



INFORMATIONS

Length 33 m
 Width 11.40 m
 Hollow 2.60 m

Electricity / Hydraulics

75 kVA generator set

Anchor line

4 electric winches 45 kN

Amenities

Crane runway 220 T
 Crane Sennebogen 100 T
 1 life base
 2 fuel tanks 10,000 L

